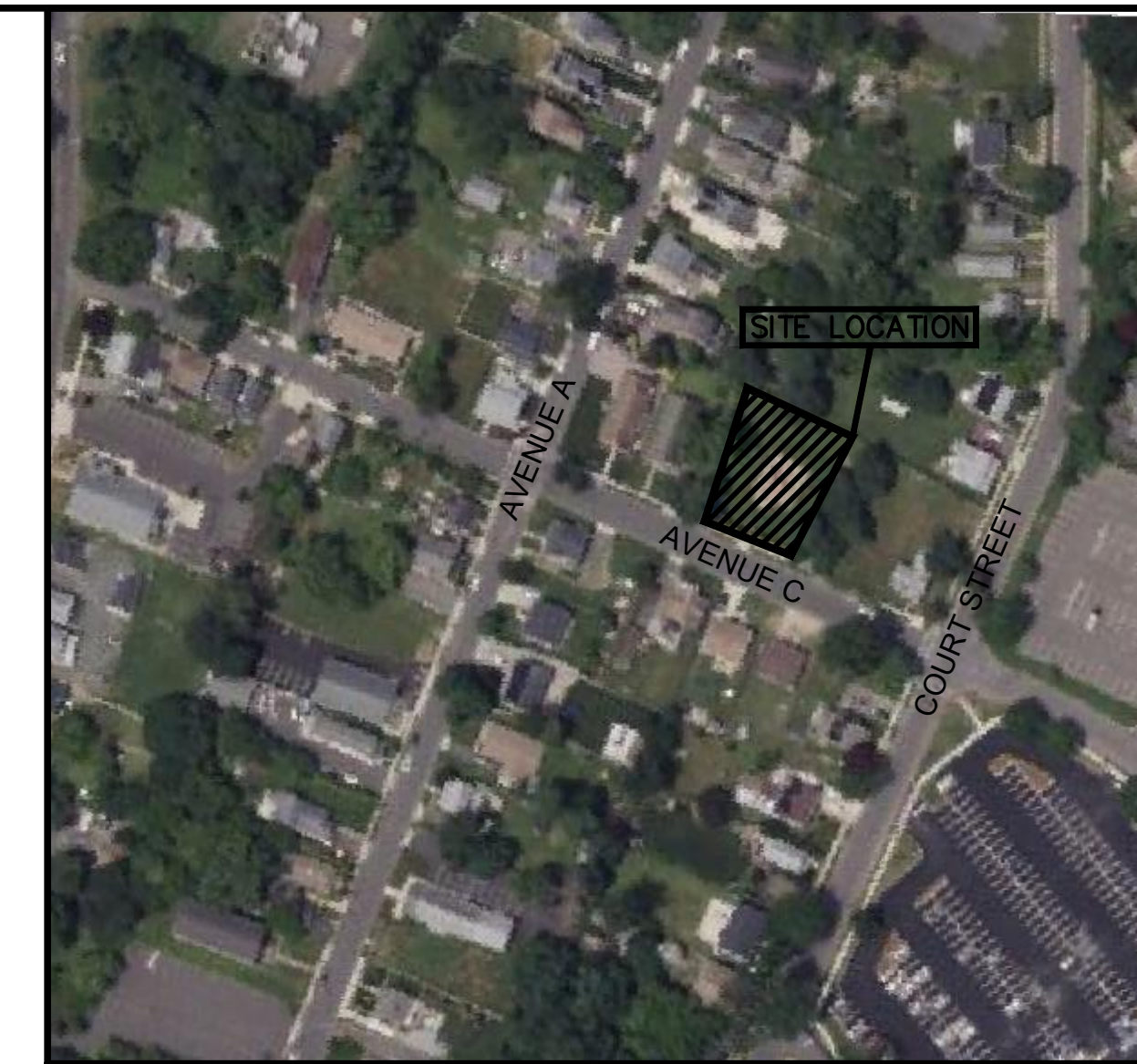


LOT 14.01

LOT 8



LOCATION MAP
NTS

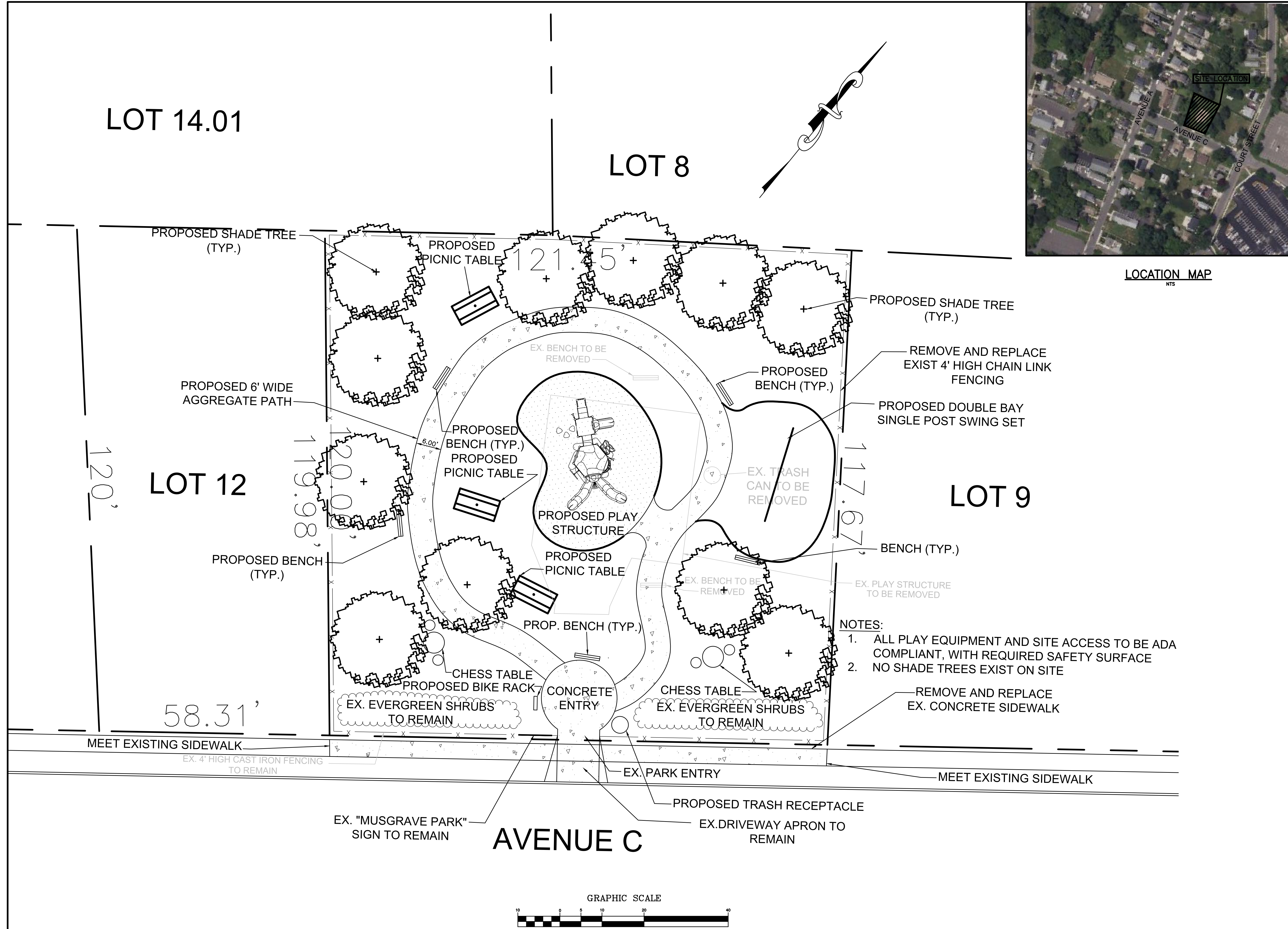

ANTHONY MALTESE, P.E., P.L.S., P.P., C.M.E.
PROFESSIONAL ENGINEER
NJ LICENSE NO. 42579
CERTIFICATE OF AUTHORIZATION #246A28239800



ABBINGTON ENGINEERING, LLC.
922 NJ-33, SUITE #3
FREEHOLD, NJ 07728
TEL: (732) 431-1440 FAX: (732) 987-5078
**ENGINEERING
SITE PLANNING
ENVIRONMENTAL
LANDSCAPE ARCHITECTURE**
www.abbingtonengineering.com

LOT 12

LOT 9

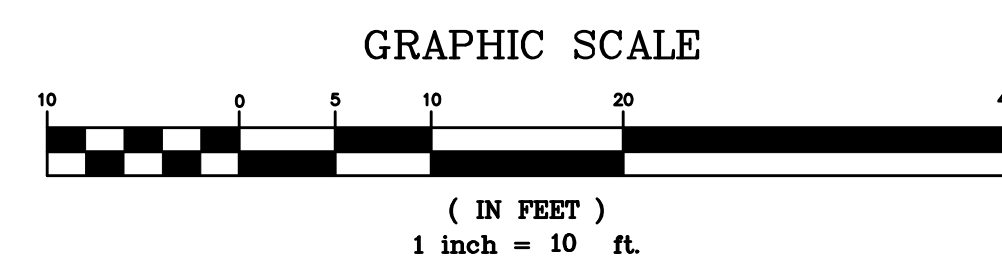


- NOTES:
- 1. ALL PLAY EQUIPMENT AND SITE ACCESS TO BE ADA COMPLIANT, WITH REQUIRED SAFETY SURFACE
 - 2. NO SHADE TREES EXIST ON SITE

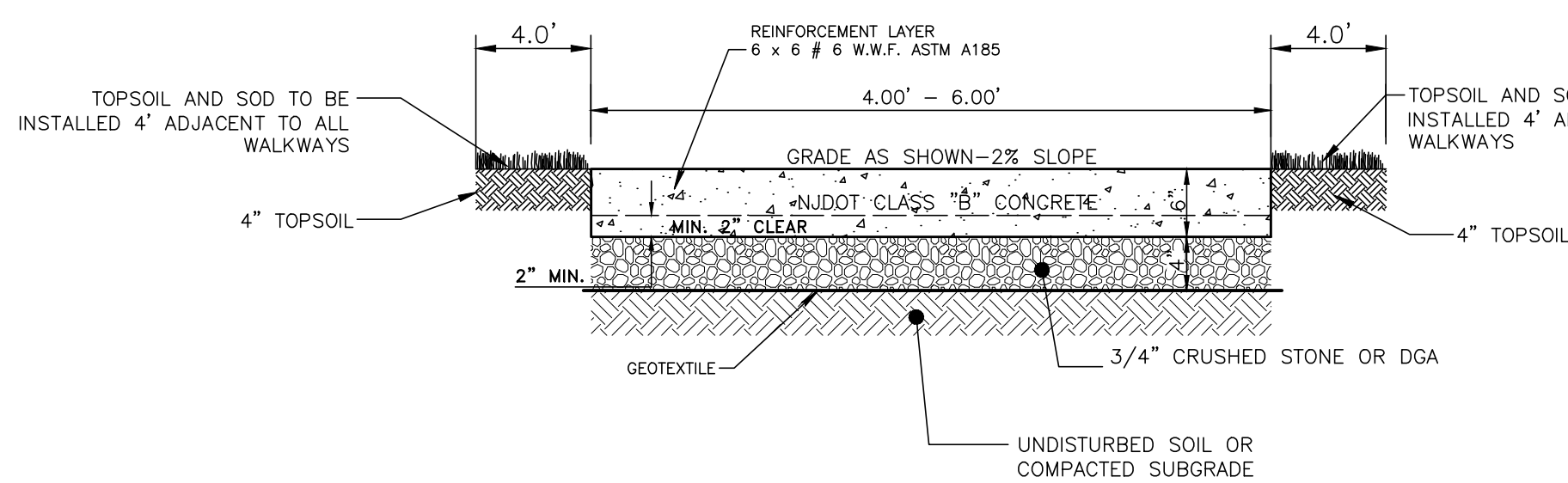
REVISIONS	DATE
DATE: 02/02/2023	JC DRAWN
SCALE: AS SHOWN	SK CHECKED
AE FILE NAME: CONCEPT PLAN	AM RELEASED
AE FILE NUMBER: 1315 FREEHOLD BORO	

ATTENTION- THIS DRAWING AND ALL INFORMATION CONTAINED HEREIN IS AUTHORIZED FOR USE ONLY BY THE PARTY FOR WHOM THE WORK WAS CONTRACTED OR TO WHOM IT IS CERTIFIED. THIS DRAWING MAY NOT BE COPIED, REUSED, DISCLOSED, DISTRIBUTED OR RELIED UPON FOR ANY OTHER PURPOSE WITHOUT THE WRITTEN CONSENT OF ABBINGTON ENGINEERING, LLC.

CONCEPT PLAN
PREPARED FOR
**MUSGRAVE PARK
BLOCK 5
LOT 11**
SITUATED IN
**BOROUGH OF FREEHOLD
MONMOUTH COUNTY
NEW JERSEY**

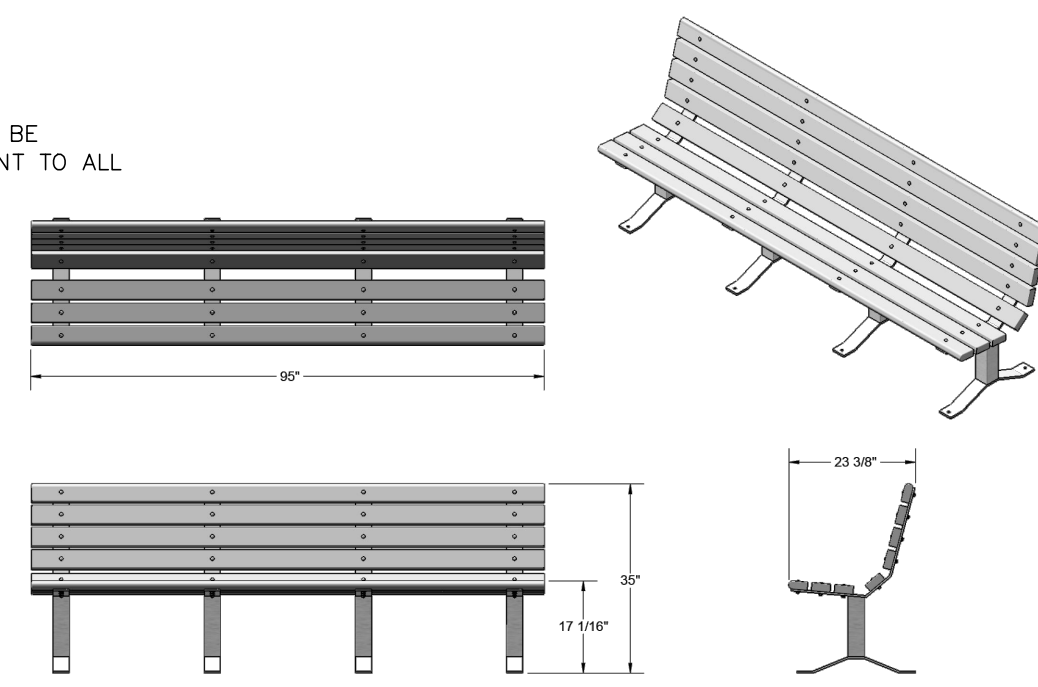


ALL DOCUMENTS PREPARED BY ABBINGTON ENGINEERING, LLC. ARE INSTRUMENTS OF SERVICE IN RESPECT OF THE PROJECT. THEY ARE NOT INTENDED OR REPRESENTED TO BE SUITABLE FOR REUSE BY OWNER OR OTHERS ON EXTENSIONS OF THE PROJECT OR ON ANY OTHER PROJECT. ANY REUSE WITHOUT WRITTEN VERIFICATION OR ADAPTATION BY ABBINGTON ENGINEERING, LLC. FOR THE SPECIFIC PURPOSE INTENDED WILL BE AT OWNERS SOLE RISK AND WITHOUT LIABILITY OR LEGAL EXPOSURE TO ABBINGTON ENGINEERING, LLC AND OWNER SHALL INDEMNIFY AND HOLD HARMLESS ABBINGTON ENGINEERING, LLC FROM ALL CLAIMS, DAMAGES, LOSSES, AND EXPENSES ARISING OUT OF OR RESULTING THEREFROM.



REINFORCED 6" CONCRETE SIDEWALK
NTS

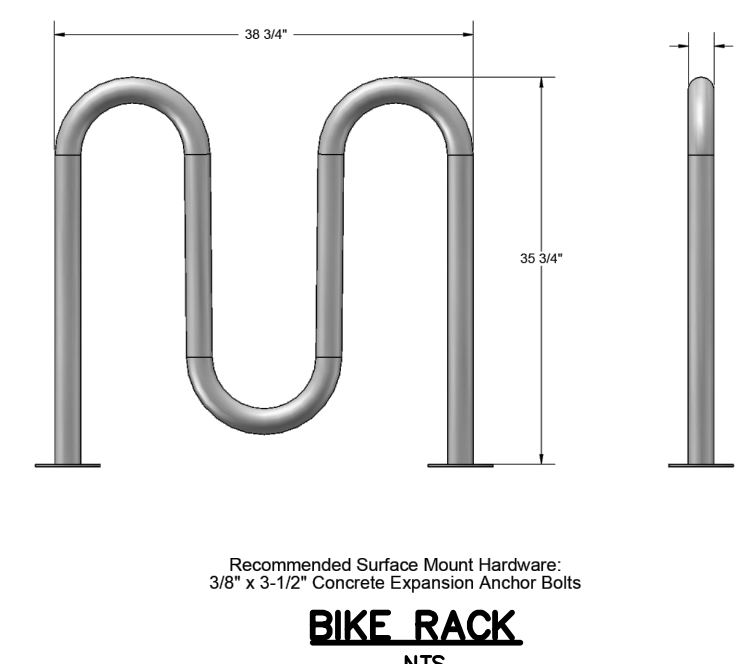
NOTES:
1. CURB AND SIDEWALK CONCRETE TO BE N.J.D.O.T. CLASS "B" AIR-ENTRAINED.
2. PROVIDE PREFORMED BITUMINOUS FIBER EXPANSION JOINTS 1/2" THICK, AT 20' (MAX.) INTERVALS. PROVIDE TOOLED JOINTS (FORMED) EVERY 4'.
3. CONCRETE SIDEWALK SHALL BE BROOM FINISHED IN STRICT CONFORMANCE WITH SECTION 606.03.
4. SIDEWALKS CONSTRUCTED WITH VERTICAL DIFFERENCES OF GREATER THAN 1", OR OTHER TRIPPING HAZARDS SHALL BE REMOVED AND REPLACED AT THE CONTRACTOR'S EXPENSE.
5. THE CONTRACTOR SHALL BE RESPONSIBLE TO ENSURE THAT CONCRETE IS ADEQUATELY PROTECTED AGAINST VANDALISM.



SURFACE MOUNT BENCH WITH BACK
NTS

SITE FURNISHING: MODEL # 9825M-R8 (CDR - CEDAR RECYCLED PLASTIC) AS MANUFACTURED BY ULTRASITE, A PLAYCORE COMPANY, OR APPROVED EQUAL.

SHOP DRAWINGS FOR ALL SITE FURNISHINGS, SITE FURNISHING FOUNDATIONS AND FOOTINGS, TO BE PROVIDED BY CONTRACTOR PRIOR TO CONSTRUCTION.

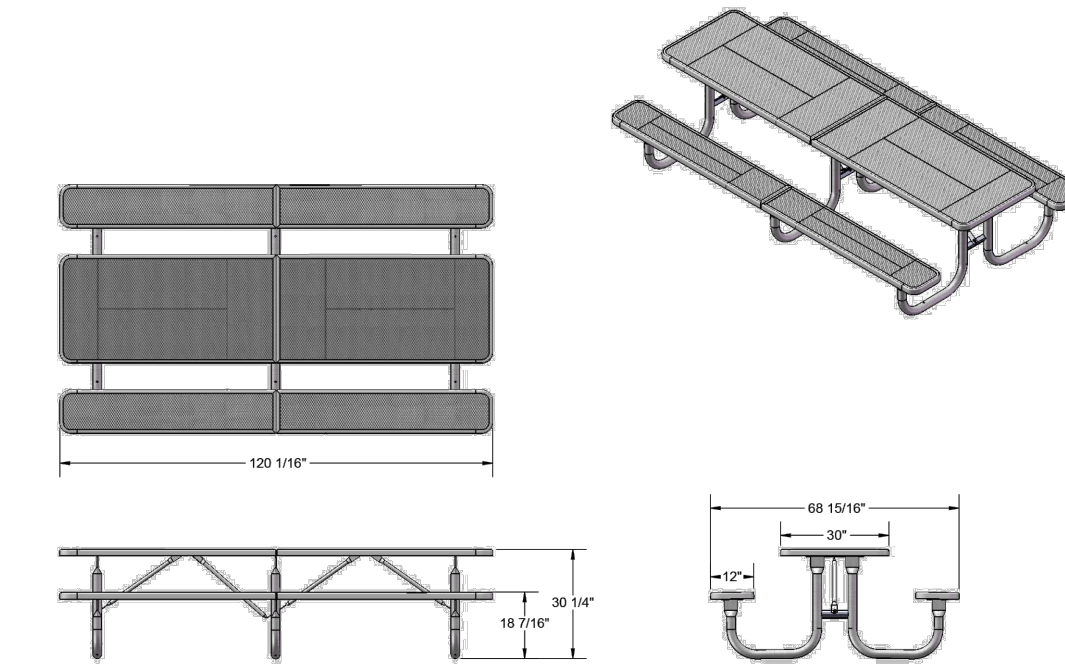


BIKE RACK
NTS

Recommended Surface Mount Hardware:
3/8" x 3-1/2" Concrete Expansion Anchor Bolts

SITE FURNISHING: MODEL # 58035M (BLACK STANDARD POWDER-COAT) AS MANUFACTURED BY ULTRASITE, A PLAYCORE COMPANY, OR APPROVED EQUAL.

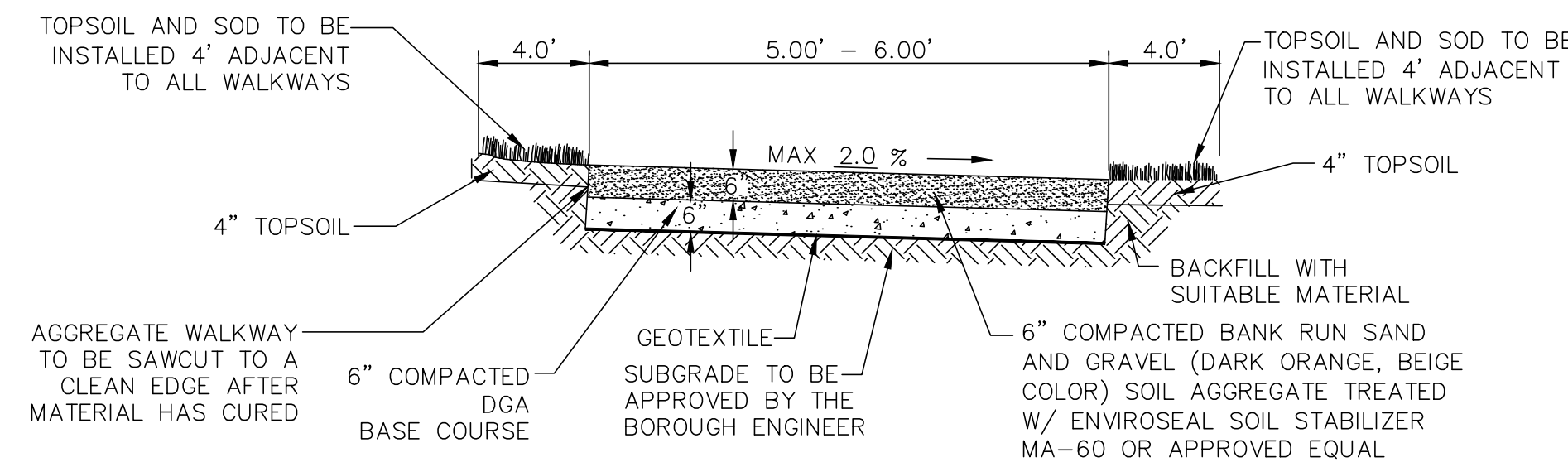
SHOP DRAWINGS FOR ALL SITE FURNISHINGS, SITE FURNISHING FOUNDATIONS AND FOOTINGS, TO BE PROVIDED BY CONTRACTOR PRIOR TO CONSTRUCTION.



10' PICNIC TABLE
NTS

SITE FURNISHING: MODEL # 238-3-V10 (GREEN THERMOPLASTIC FINISH) AS MANUFACTURED BY ULTRASITE, A PLAYCORE COMPANY, OR APPROVED EQUAL.

SHOP DRAWINGS FOR ALL SITE FURNISHINGS, SITE FURNISHING FOUNDATIONS AND FOOTINGS, TO BE PROVIDED BY CONTRACTOR PRIOR TO CONSTRUCTION.

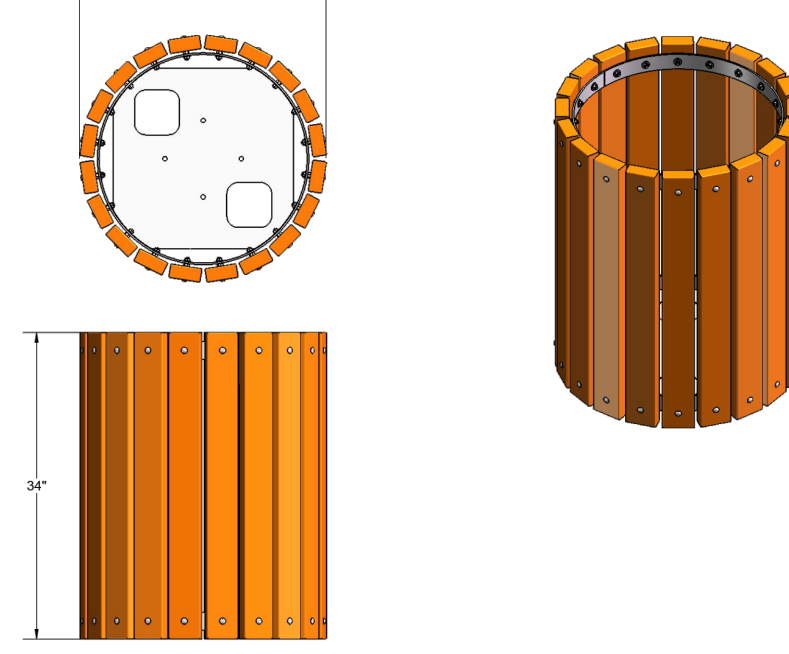


PATH SPECIFICATIONS:
AGGREGATE MATERIAL SHOULD CONFORM TO THE FOLLOWING SAE REQUIREMENTS:

SIEVE SIZE	PERCENT PASSING
1/2 INCH (12.5 MM)	90-100
3/8 INCH (9.5 MM)	75-90
1/4 INCH (6.3 MM)	60-75
NO. 30 (600 UM)	60-40
NO. 100 (150 UM)	20-40
NO. 200 (75 UM)	10-14

- MIXING ENVIROSEAL MA-60:**
- DOSAGE RATE: CONCENTRATED ENVIROSEAL MA-60 IS CALCULATED AT TEN (10) GALLONS PER CUBIC YARD.
 - CALCULATION OF WATER: THE WATER ADDITION TO USE WITH THE MA-60 IS THE DIFFERENCE BETWEEN IN-SITU MOISTURE CONTENT OF THE STONE MIX AND OPTIMUM MOISTURE CONTENT REQUIRED FOR COMPACTION AS EVIDENCED BY THE DRY DENSITY WEIGHT OF THE STONE MIX OR AS DIRECTED BY AN ONSITE TECHNICIAN.
 - MIXING MA-60/WATER WITH STONE MIX: FOUR INCHES OF STONE MIX IS BLENDED WITH MA-60 PREBLENDED WITH WATER ALLOWING TWO INCHES OF STONE MIX ON THE BOTTOM. BLENDING THE MA-60 AND WATER MIXTURE IS BEST COMPLETED USING A SOIL MIXER OR TILLER TO THOROUGHLY BLEND THE STONE MIX WITH THE MA-60 AND WATER MIX.
 - COMPACTION OF SURFACE: USE OF A 3 TO 5 TON DOUBLE DRUM VIBRATORY ROLLER SUFFICIENT IN SIZE TO EFFECTIVELY COMPACT THE DEPTH OF TREATED SURFACE. (95%)
 - TOP COAT SEALING: AFTER APPROXIMATELY ONE DAY HAS LAPSED, A TOPICAL APPLICATION IS REQUIRED. APPLY TOPCOAT UNIFORMLY UNTIL PATHWAY IS COMPLETE SATURATED. ADDITIONAL TOP COAT APPLICATIONS MAY BE NECESSARY. TEST SMALL AMOUNTS OF WATER/MA-60 MIX RATIOS ON A SMALL SECTION OF TREATED PATH BY CHECKING ADSORPTION. THE MIXTURE SHOULD DISAPPEAR QUICKLY. MIX PREDETERMINED AMOUNT OF MA-60 AND WATER AND EVENLY SPRAY ON THE SURFACE ENSURING NO PUDDING OCCURS. ALLOW TO ABSORB COMPLETELY AND REPEAT APPLICATION.
 - DO NOT PREPARE OR INSTALL MATERIAL DURING, PRIOR TO, OR IMMEDIATELY FOLLOWING RAINFALL OR WHEN TEMP IS 50° F AND FALLING WITHIN A 24-HOUR PERIOD.
 - THE USE OF DIAPHRAGM PUMPS FOR SPRAYING MA-60 IS SUGGESTED. GEAR DRIVEN OR TRASH PUMPS WILL MALFUNCTION OR SEIZE AND POSSIBLY DAMAGE THE POLYMER.
 - AFTER MIXING THE MA-60 AND WATER MIXTURE WITH THE AGGREGATE, ENSURE THERE ARE NO DEVIATIONS THAT CAN CAUSE PONDING, RAKE AND LEVEL THE SURFACE PRIOR TO COMPACTION.
 - ENSURE THERE IS SUFFICIENT PITCH TO ALLOW PROPER DRAINAGE ON THE FINISHED SURFACE.
 - THE FIRST PASS WITH THE ROLLER IS STATIC ROLLING ONLY. SHOULD ANY AREAS NEED TO BE REPAIRED, IT IS BEST TO COMPLETE REPAIRS AND MIX THE AREA AGAIN PRIOR TO COMPACTION. AFTER ONE PASS OF STATIC ROLLING, THREE PASSES VIBRATORY IS RECOMMENDED. DO NOT VIBRATORY ROLL MORE THAN FOUR TIMES. ANY LINES LEFT BY THE ROLLER SHOULD BE CLEANED UP BY STATIC ROLLING ONLY.
 - DO NOT USE PLATE COMPACTORS. THE VIBRATION CAN DAMAGE THE POLYMERS AND VOID ANY WARRANTY.
 - DO NOT TREAT MORE AREA THAN CAN BE COMPLETED BEFORE THE MIXED AGGREGATE DRIES. IF THE SURFACE BEGINS TO DRY PRIOR TO COMPLETION, LIGHTLY MIST THE SURFACE WITH WATER.

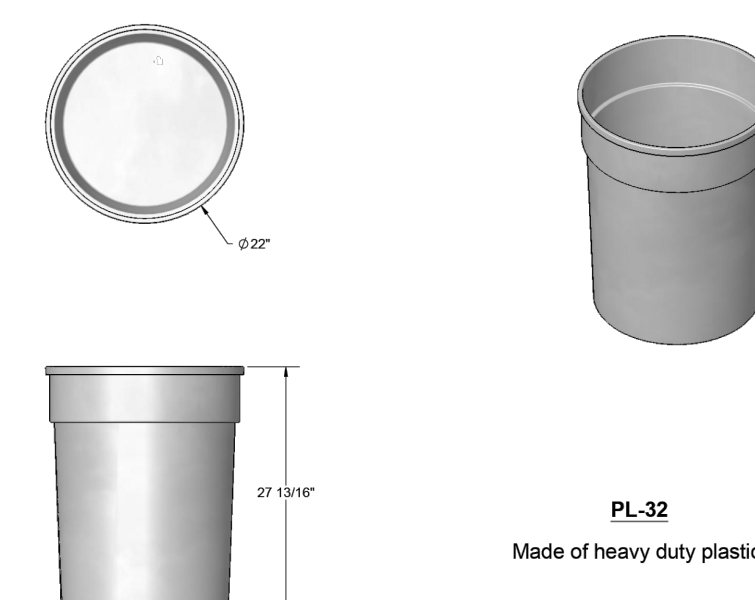
PATH DETAIL
NTS



TRASH RECEPTACLE
NTS

SITE FURNISHING: MODEL # TR-32-R (CDR - CEDAR RECYCLED PLASTIC) AS MANUFACTURED BY ULTRASITE, A PLAYCORE COMPANY, OR APPROVED EQUAL.

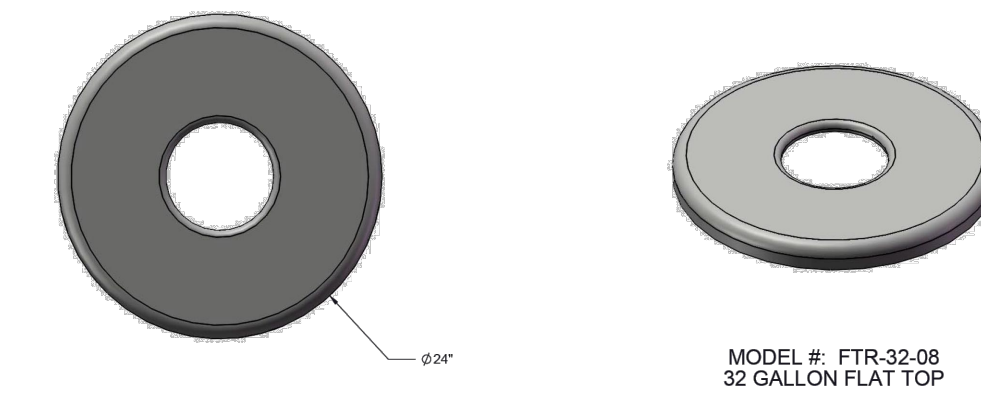
SHOP DRAWINGS FOR ALL SITE FURNISHINGS, SITE FURNISHING FOUNDATIONS AND FOOTINGS, TO BE PROVIDED BY CONTRACTOR PRIOR TO CONSTRUCTION.



TRASH RECEPTACLE LINER
NTS

SITE FURNISHING: MODEL # PL-32 AS MANUFACTURED BY ULTRASITE, A PLAYCORE COMPANY, OR APPROVED EQUAL.

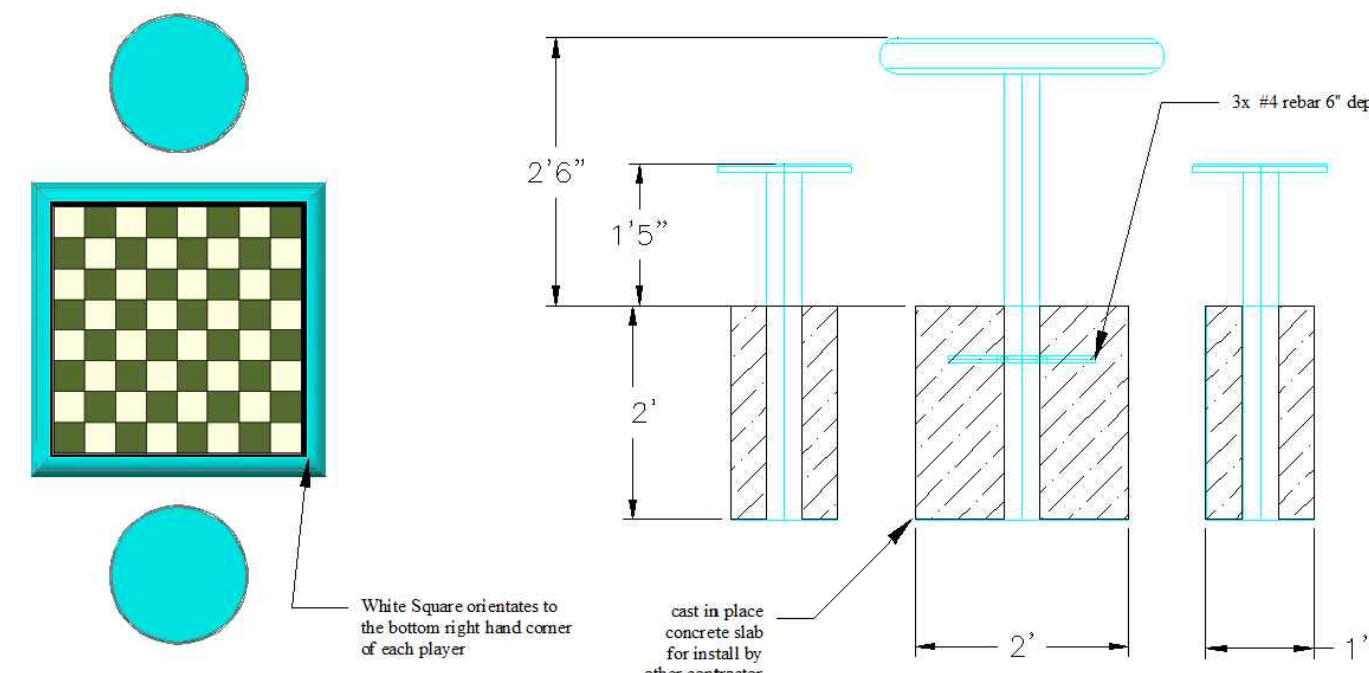
SHOP DRAWINGS FOR ALL FOR ALL SITE FURNISHINGS TO BE PROVIDED BY CONTRACTOR PRIOR TO CONSTRUCTION.



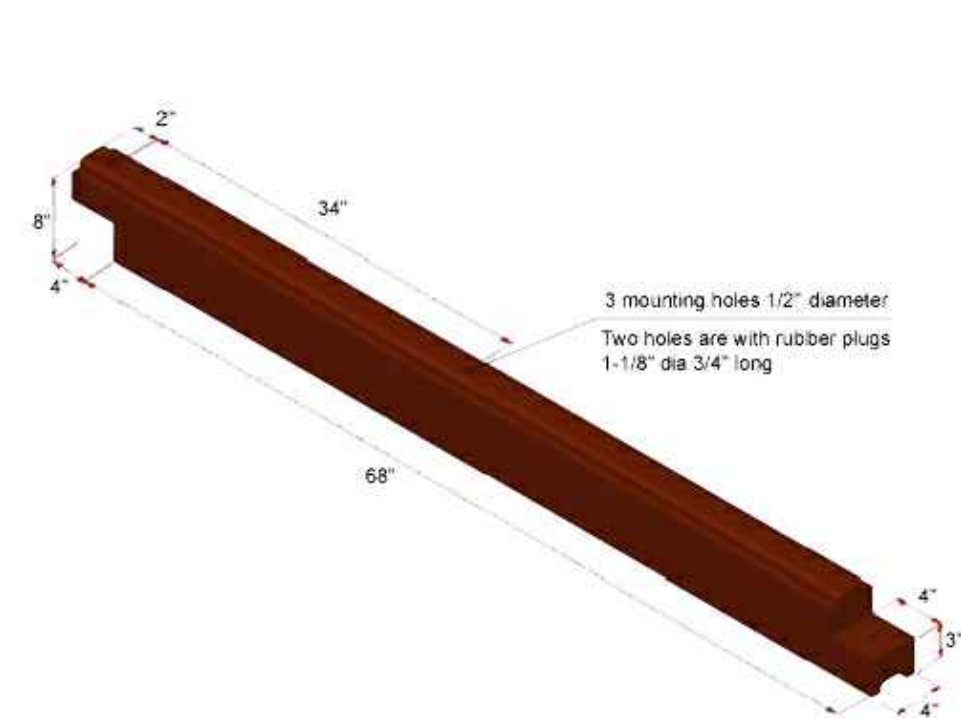
TRASH RECEPTACLE LID
NTS

SITE FURNISHING: MODEL # FTR-32-08 AS MANUFACTURED BY ULTRASITE, A PLAYCORE COMPANY, OR APPROVED EQUAL.

SHOP DRAWINGS FOR ALL SITE FURNISHINGS TO BE PROVIDED BY CONTRACTOR PRIOR TO CONSTRUCTION.

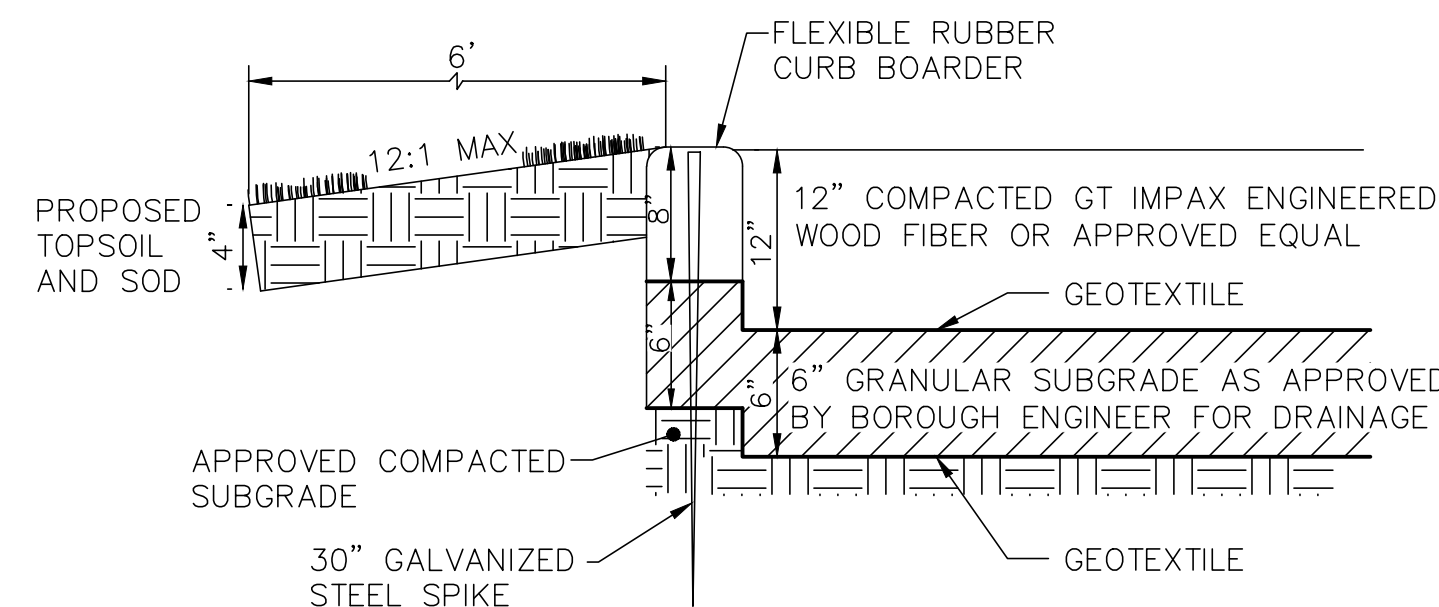


CHESS TABLE DETAIL
NTS



FLEXIBLE RUBBER CURB BOARDER - HEAVY DUTY
NTS

SITE FURNISHING: MODEL RW3 (4"W X 8"H X 72"L) AS MANUFACTURED BY PLAYSAFER RUBBER CURB, OR APPROVED EQUAL.



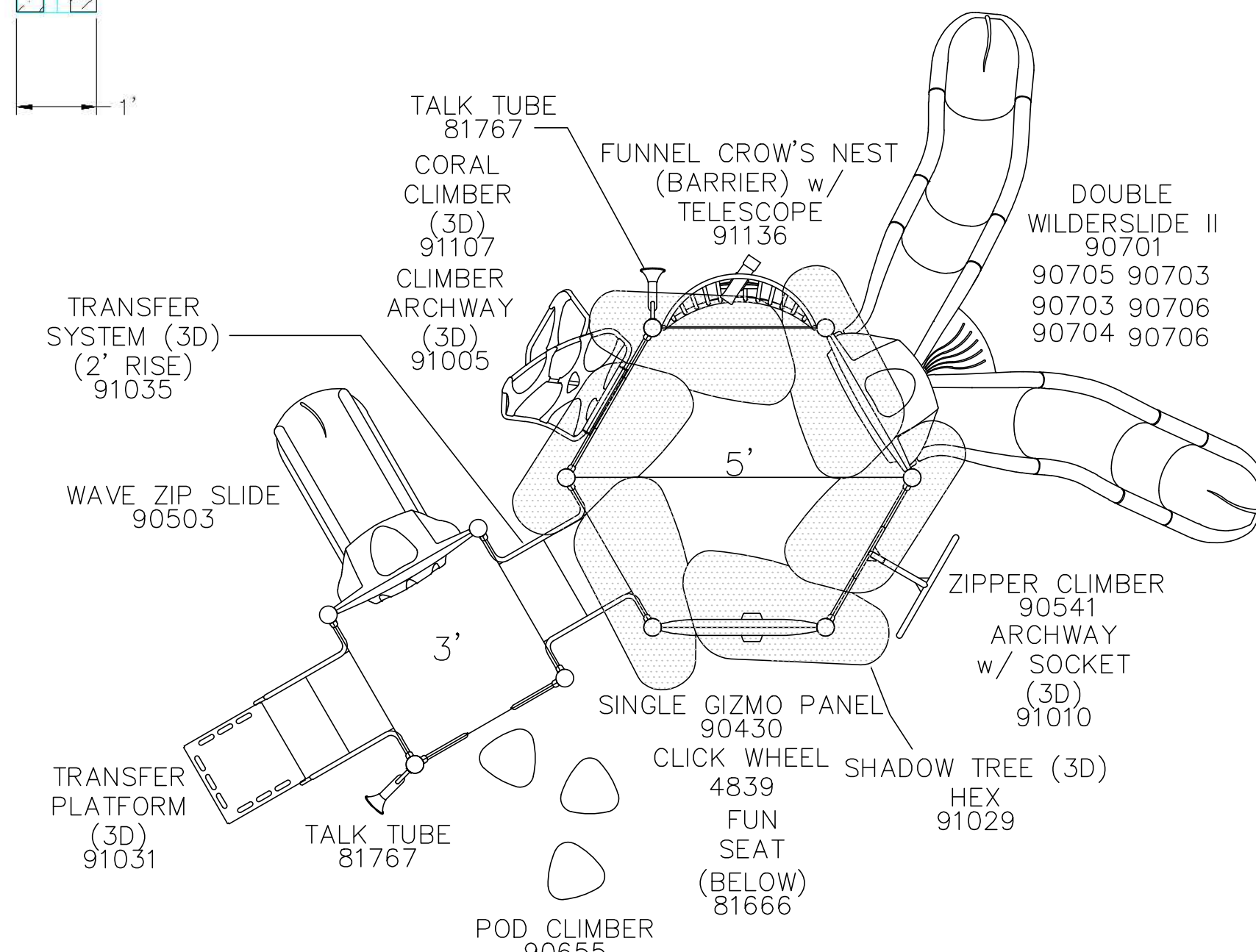
PLAYGROUND SURFACING
NTS

QUALITY ASSURANCE AND COMPLICANE DETAILS:

- ACCESSIBILITY OF SURFACE SYSTEMS - ASTM F1951-08: DETERMINATION OF ACCESSIBILITY OF SURFACE SYSTEMS UNDER AND AROUND PLAYGROUND EQUIPMENT.
- IMPACT ATTENUATION - ASTM F1292-04: IMPACT ATTENUATION OF SURFACE SYSTEMS UNDER AND AROUND PLAYGROUND EQUIPMENT.
- STANDARD FOR ENGINEERED WOOD FIBER - ASTM F2075-04: MINIMUM CHARACTERISTICS FOR THOSE FACTORS THAT DETERMINE PARTICLE SIZE, CONSISTENCY, PURITY AND ABILITY TO DRAIN.
- IPEMA CERTIFICATION: MANUFACTURER MUST PROVIDE PROOF OF CERTIFICATION. "IN THE INTEREST OF PUBLIC PLAYGROUND SAFETY, IPEMA PROVIDES AN INDEPENDENT LABORATORY WHICH VALIDATES A MANUFACTURER'S CERTIFICATION OF CONFORMANCE TO ASTM F1292-04 AND ASTM F2075-04. A LIST OF CURRENT VALIDATED PRODUCTS, THEIR THICKNESS AND CRITICAL HEIGHTS MAY BE VIEWED AT WWW.IPEMA.ORG."

SITE FURNISHING: GT IMPAX ENGINEERED WOOD FIBER AS MANUFACTURED BY GAMETIME, A PLAYCORE COMPANY, OR APPROVED EQUAL.

SHOP DRAWINGS FOR ALL EQUIPMENT, EQUIPMENT FOUNDATIONS AND FOOTINGS, TO BE PROVIDED BY CONTRACTOR PRIOR TO CONSTRUCTION.



PLAY STRUCTURE DETAIL
NTS

EQUIPMENT: CREST CANOPY - MODEL NUMBER: PS16035 AS MANUFACTURED BY GAMETIME, A PLAYCORE COMPANY, OR APPROVED EQUAL.

SHOP DRAWINGS FOR ALL EQUIPMENT, EQUIPMENT FOUNDATIONS AND FOOTINGS, TO BE PROVIDED BY CONTRACTOR PRIOR TO CONSTRUCTION.

ANTHONY MALTESE, P.E., P.L.S., P.P., C.M.E.
PROFESSIONAL ENGINEER
NJ LICENSE NO. 42579

CERTIFICATE OF AUTHORIZATION #246A28239800



ABBINGTON ENGINEERING, LLC.
922 NJ-33, SUITE #3
FREEHOLD, NJ 07728
TEL: (732) 431-1440 FAX: (732) 987-5078

ENGINEERING
SITE PLANNING
ENVIRONMENTAL
LANDSCAPE ARCHITECTURE

www.abbingtonengineering.com

REVISIONS	DATE
DATE: 02/02/2023	JC
SCALE: AS SHOWN	SK
AE FILE NAME: CONCEPT PLAN	AM
AE FILE NUMBER: 1315 FREEHOLD BORO	REL

THIS DRAWING AND ALL INFORMATION CONTAINED HEREIN IS AUTHORIZED FOR USE ONLY BY THE PARTY FOR WHOM THE WORK WAS CONTRACTED OR TO WHOM IT IS CERTIFIED.
THIS DRAWING MAY NOT BE COPIED, REUSED, DISCLOSED, DISTRIBUTED OR RELIED UPON FOR ANY OTHER PURPOSE WITHOUT THE WRITTEN CONSENT OF ABBINGTON ENGINEERING, LLC.

DETAILS
PREPARED FOR

**MUSGRAVE PARK
BLOCK 5
LOT 11**

SITUATED IN
**BOROUGH OF FREEHOLD
MONMOUTH COUNTY
NEW JERSEY**

\\DENOV0\Abington\Engineering\Jobs\1315 (Freehold Boro)\1315.000.023 (General)\Freehold Musgrave Concept Plan Details.dwg, 2/9/2023 11:06:51 AM